

5-14-1958

Snapshot, May 14, 1958

Milwaukee-Downer College

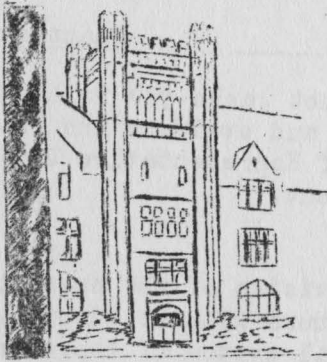
Follow this and additional works at: http://lux.lawrence.edu/mdc_newspapers

© Copyright is owned by the author of this document.

Recommended Citation

Milwaukee-Downer College, "Snapshot, May 14, 1958" (1958). *Milwaukee-Downer College Student Newspapers*. Paper 268.
http://lux.lawrence.edu/mdc_newspapers/268

This Newspaper is brought to you for free and open access by the Milwaukee-Downer College Publications and Histories at Lux. It has been accepted for inclusion in Milwaukee-Downer College Student Newspapers by an authorized administrator of Lux. For more information, please contact colette.brautigam@lawrence.edu.



SNAPSHOT

"AN ACTIVE VOICE ON CAMPUS"

M.D.C.

READER'S THEATRE PERFORMANCE

The stage will be set for the second presentation of Reader's Theatre to be given on the Downer campus this year. There will be drama and delight forming an evening designed by the students for their M.D.C. audience. This preview evening will indicate what will greet many Milwaukee Drama groups next year.

"Just for Laughs," the show which will be presented by Ilene Hanson, is a program created for pure enjoyment. The selections which have been chosen for the show include sketches from Ogden Nash, Robert Benchley and Dorothy Parker. Presented in an amusing fashion, they bring to life the characters which the humorists have created.

Marla McCarty's show, entitled "Presenting Nell Gwyn" illustrates to a more serious and dramatic side of literature and the theater. The presentation centers around Nell Gwyn, an actress of the Restoration period, and includes sketches from plays of the theatres of that day. In showing the scenes from the plays, Marla acts as Nell in each and for continuity takes the role of a stage manager.

NEW STUDENTS HEALTH POLICY ADOPTED FOR NEXT YEAR

A revision of the Student Health Program has been announced after a two year extensive study of health services in American colleges and universities conducted by the Administration and the Trustees of the College. As a result of this study physical examination and other medical record forms have been greatly revised. In addition, the following basic reorganization of our health service has been approved and will be instituted in September, 1958.

The annual physical examination heretofore held on our campus will be discontinued. New students will be examined by their family physicians with reports filled out on record forms supplied by the College. Returning students will fill out forms at registration time indicating any change in their health status.

In place of the \$10 health examination fee, there will be substituted a fee of \$10 for accident and health insurance. The plan will be compulsory for dormitory students and optional for city students who may prefer to deal entirely with their family physician. The policy may be continued during the summer vacation for \$4.00 if desired.

In addition to certain itemized coverage which will be indicated in a policy mailed to each student, the plan will also cover expense up to \$3.00 for office calls, \$4.00 for hospital calls, and \$5.00 for Infirmary calls, authorized by the College.

Under this new plan the College physicians will be Dr. Silas M. Evans and Dr. Robert A. Kebbekus, who will be assisted by a panel of selected Milwaukee physicians.

SUMMER JOBS LOOM SCARCE

The editorial board quotes results of N.S.A. conference concerning the drastic state of summer job possibilities for college students as reported

by Mary Dittmer.

"In regard to college students specifically, employers are not sympathetic! The reason: the college students themselves.

(cont. p. 4)

Letter to the Editor

Who is to pay for controversial speakers? The policy on speakers passed by the College Government Association at the April meeting embodies a very desirable ideal - i.e., that students should be allowed to hear the widest variety of opinion in their search for truth. But did C.G.A. consider the serious problem of costs? Some of our speakers are paid from college funds set aside for that expense to the college. But there are some who, though they would charge the college nothing directly, would cost a great deal in lost contributions to our funds and in lost fees of students withdrawn from college or prospective students deterred from coming to the college. Such losses can be incurred quite innocently by well-meaning but inexperienced groups who invite controversial speakers or engage in other activities causing unfavorable publicity.

If student groups are to assume the serious responsibility of deciding whether a given controversial speaker will or will not injure the college, will the same groups undertake the responsibility of repaying any loss incurred by their actions? As a faculty member with a vested interest in the college's financial security, I should like an answer to this problem.

SNAPSHOT
 Editor.....Gretchen Brandt
 Ass't Editor...Jan Schmidt
 Bus. Mgr.....Lucy Eaton
 Advisor.....Mr. Dale

20 OUT OF 30 SCHEDULE SENIOR CONFERENCES WITH PRESIDENT JOHNSON

An excellent opportunity for students to constructively evaluate and suggest and confirm the competence of faculty members is given each Spring to the members of the senior class in a conference with the President of our college. Why this drastic lack of interest in making appointments for this purpose?

Perhaps there is a need to review the fundamentals of such a conference; the following may clarify questions and spark enthusiasm.

As a part of the total continuous evaluation of faculty members, individual conferences with the College president are now available to seniors by appointment. These meetings are for evaluating the teaching ability of their professors and other comments or suggestions concerning the college or their college life in general.

In addition to opinions of the division chairman, the department chairman, members of the department and related fields, administrative evaluations, alumni and trustee evaluations on occasion, and the personal observation of the president, there has been a desire for a systematic and official representation of student opinion.

Seniors, the most mature class, have been the group usually invited for conferences, close to the end of the year where they can look back upon their college years.

Snapshot asks you to consider and evaluate the issue of Representative Government.

A revision of the present structure without adopting a total system of representative government would mean a representative council which would have power to handle routine and administrative problems. All major legislation would go to the student body for the vote and final decision.

Are we interested enough to operate intelligently under the revision of our present structure of government?
 (cont. page 4)

In the past, there has been some controversy over the value of student opinions in this area. In any case, indirect feelings are heard throughout the year. However, Mr. Johnson has felt that a representative direct evaluation is helpful.

Although a large percentage of former classes invited have taken the opportunity to express their views, the number of Red Class members has been low. A possible misunderstanding about the nature of the conference has been suggested as one reason for this. In order to allow all those who wish to meet with Mr. Johnson, they will be continued until the end of the school year.

Here is a definite opportunity to voice student opinion and evaluation. Let's use it!

S. Rosenthal

SPLASH ON REGATTA SCENE

"Women's crews are the exception rather than the rule. By taking advantage of our having this unique sport, we can bring Downer to the attention of more Milwaukeeans."

Kit Kalmbach, Downer's social chairman for next year, expresses Social Committee's aims in the statement above. To utilize Regatta as one of the big occasions of the year, the committee has planned a picnic supper after the races and a party for that evening.

The picnic supper will be served in Hawthorn Den at 5:30. Dorm students receive a free meal ticket for any guest they would like to invite, and city students receive a free meal if they have an activity card.

At 7:30, the party begins in Greene. This is not strictly a date affair, however, some fraternities have been invited and students are urged to invite friends as well as parents to Regatta and the party.

I.I.T. MEN'S GROUP PLAN "COMEBACK"

On Thursday, May 22, the band that has appeared here earlier with the Illinois Institute of Technology Men's Chorus is coming to Downer to play from after dinner until 10:00 P. M.

As it is an informal party, students are requested to bring dates.

ON THE TOWN

There is a veritable potpourri of events in Milwaukee this week...

The Wisconsin Federation of Handweavers will be exhibiting at the Charles Allis Art library through May 30. This should prove to be excellent fare...

For avid theatre fans, J. B. Priestley's "An Inspector Calls" will be offered at the Jewish Community Center, at 8:30 p.m. on May 17 - 18.

Future events at the Memorial Center include paintings from the Layton collection on exhibit May 15 through June 8, and an exhibition of Advertising Art will be on the docket from May 15 through June 1. Incidentally, a gallery tour of the latter exhibition will be conducted by Masoy Tarbox. It is important to note that free guided tours may be arranged by calling Br. 1-9508.

FOR THE RECORD

The second annual Honors Day Assembly was held Tuesday, May 6, in the auditorium. Music was provided by Marcia Perry at the organ and the college choir. The mathematics award was won by Janice Matulis for the highest achievement in mathematics in the first semester of the freshman year. Marilyn Vogel, a freshman, received a handbook of chemistry and physics for her achievement in science during the first semester. (cont. p. 4)

THE "MEAD" OF THE
MATTER

As I was looking over some of the new books which are waiting to be cataloged in Chapman Memorial Library, I came across the last of Eugene O'Neill's full-length plays, A Touch of the Poet. This book is especially interesting as part of a cycle O'Neill, who died in 1953, did not live to complete.

O'Neill's position in the theater is not yet determined. Though some consider him the greatest modern American playwright, other critics feel that he has a unique understanding of the human character without the words to carry the ideas through. John Mason Brown says of him, "O'Neill's own tragedy and ours, has been that though he possesses the tragic vision he cannot claim the tragic tongue."

A typical review is this one by George Weales in Commonweal.

A Touch of the Poet has all the familiar O'Neill characteristics. There are for instance, the awkward, bald exposition at the beginning and the nagging sense of insufficient language (here so much of the playwright's stage Irish). More important there are characters who live in and of their reactions to one another and scenes that often approach beauty."

I read it and liked it.

Correction on Studio Club Officers:

Treasurer.....
Helen Bystol

SPORTS IN REVIEW

Lucille Eaton, the newly elected A. A. president has announced the new officers and board members of A. A. They are: Lucille Eaton, president; Helen By-stol, vice-president; Ann Dyer, secretary; Judy Davis, treasurer. The new board members are: the new officers, Darlene Dick, Bunny Brekelbaum, Joan Christopherson, June Goldschmid, Mary Jane Jones, Julie Swenby, Carole Rybarz, Carol Neibel, Jean Haase, Sheri Biegelaar, and Priscilla Parsche.

Among Lucille's plans for next year are a splash party open to the school at the end of September and a camping trip for members in early October.

The spring tennis tournament managed by Nona Roesler is now in session. Only those with better than average ability are competing. The archery tournament will be held during the last week of the college semester. Those with better than average ability will be eligible for the finals. Lucille Eaton is the Student Manager for archery. There are no definite plans yet for a golf tournament. Pat Mahler is the Student Manager for this sport.

(Rep government con't.)

A total system of representative government means a representative student legislature which would have the power to handle all problems and issues related to the student body.

Are we large enough to warrant such a system?

(HONORS ASSEMBLY con't)

Next presented were awards given by Mountebanks. The Mountebanks Recognition Award, which required a minimum of fifty points in the club activities and participation in three of the six areas of the theater, was won by Betty Havens, Mary Ann Jensen, and Marla McCarty. The award, a fifteen dollar check, was won by both Betty Havens and Mary Ann Jensen.

The Home Economics Award a scholarship for the senior year, was won by Carolyn Bogle.

The Elizabeth Richardson Art Award was won by Jane Simmons for an abstract painting. Kathleen Frawley won honorable mention.

Outstanding sportsmanship, skill, and activity in the Athletic Association are the criteria for the Athletic Association Award. It was won by seniors Nan Haley and Shirley Zurchauer.

The last presentations were the Phi Beta Kappa awards for writing. Joan Andrews won first place in the poetry division for "Prayer of Youth." Honorable mention were awarded to Anne Seyfarth, Barbara Mayne, and Sonia Bernhardt. First place in the short story division was given to Joan Andrews for "Night of the Pigs." Noelle Jackson, Barbara Mayne, and Sheila Rosenthal received honorable mention. The students elected to join Phi Beta Kappa were Joan Andrews and Marilyn Kappes.

(SUMMER JOBS con't)

This is an example. In June the students rush out to his job, thankful that he has one when there are those who haven't. Then around July he starts getting tired, and the weather starts getting hot. By August the weather is hotter, and he decides that he has been working hard all year now, and he hasn't had any vacation. So he quits his job. The worst offenders are teachers, incidentally; college students are next. High school students are not as much a problem.

Mr. Hugh from the Wisconsin State Employment service suggest these areas for student investigation:

Summer camps - people with life saving, craft skills, experience.

Office work - the greater your skills, the better your chances. Typing, shorthand, and calculating machine knowledge.

Drive-ins, drug stores and waitressing - but these are poorer paying jobs.

Mary Dittmer takes an optimistic viewpoint and gives this advice: "If you are still looking for a job, apply at the Wisconsin Employment bureau. Most of the employers contacted in the Milwaukee area will not know how much summer help they will need until the last minute. So there is still a chance.